


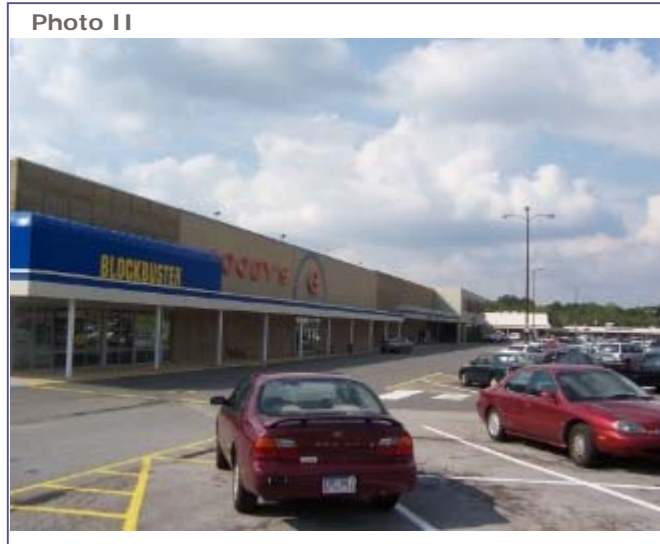
Rainbow Plaza Shopping Center

Property ID: 14011451
<http://listing.loopnet.com/14011451>

Rainbow Plaza Shopping Center 
 3225 Rainbow Drive
 Rainbow City, AL 35906
 County: Etowah

For more information, click to email:
Jason Stinson (256) 549-1499

Commercial Realty Services Of Alabama, Inc.



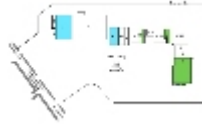
For Lease	Active
Primary Type:	Shopping Center Strip Center
Total Space Available:	88,710 SF
Divisible To:	2,400 SF
Maximum Contiguous:	35,000 SF
GLA:	218,205 SF
Date Last Verified:	4/6/2005

Available Spaces

Suite/ Floor	Space Available	Minimum Divisible	Maximum Contiguous	Rental Rate	Date Available	Space Type	Sublease
A-3	35,000	N/A	N/A	\$9.68/SF/Year	Vacant	Strip Center	N/A
Lease Type:		NNN					
B-1	11,400	N/A	N/A	\$9.68/SF/Year	Vacant	Strip Center	N/A
Lease Type:		NNN					
T	2,400	N/A	N/A	\$10.68/SF/Year	Vacant	Strip Center	N/A
Lease Type:		NNN					
M	5,200	N/A	N/A	\$9.68/SF/Year	Vacant	Strip Center	N/A
Lease Type:		NNN					
R	9,750	N/A	N/A	\$9.68/SF/Year	Vacant	Strip Center	N/A
Lease Type:		NNN					
S	24,960	N/A	N/A	\$8.68/SF/Year	Vacant	Strip Center	N/A
Lease Type:		NNN					

Additional Photos



Rainbow Plaza Shopping Center**Property View****Property View II****Property View III****Property View IV****Property View V****Property Location Map****Property Layout****Aerial of Area Surrounding Rainbow Plaza****Aerial Photo Area****Aerial Photo Area II**

Additional Information

Property Description:

28.5 Acre Shopping Center located in the suburban Gadsden, Alabama area.

Location Description:

Rainbow Plaza is a 218,205 square foot shopping center located in Rainbow City, a southwest suburb of Gadsden, Alabama. The shopping center fronts Rainbow Drive (US 411) which has a traffic count of approximately 26,710 Cars per day at the center. Major anchor tenants include Food World, CVS Drugs, Goody's, Dollar General, Blockbuster Video and Gadsden Business College. The shopping center provides you with ample parking and excellent visibility.

Lot Size:

28.50 Acres

Anchor Tenant 1:

Food World

Anchor Tenant 2:

CVS Pharmacy

Additional Types:

Neighborhood Center

Anchor Tenant 3:

BlockBuster Video



9/14/2004

The information above has been obtained from sources believed reliable. While we do not doubt its accuracy we have not verified it and make no guarantee, warranty or representation about it. It is your responsibility to independently confirm its accuracy and completeness. Any projections, opinions, assumptions, or estimates used are for example only and do not represent the current or future performance of the property. The value of this transaction to you depends on tax and other factors which should be evaluated by your tax, financial, and legal advisors. You and your advisors should conduct a careful, independent investigation of the property to determine to your satisfaction the suitability of the property for your needs.